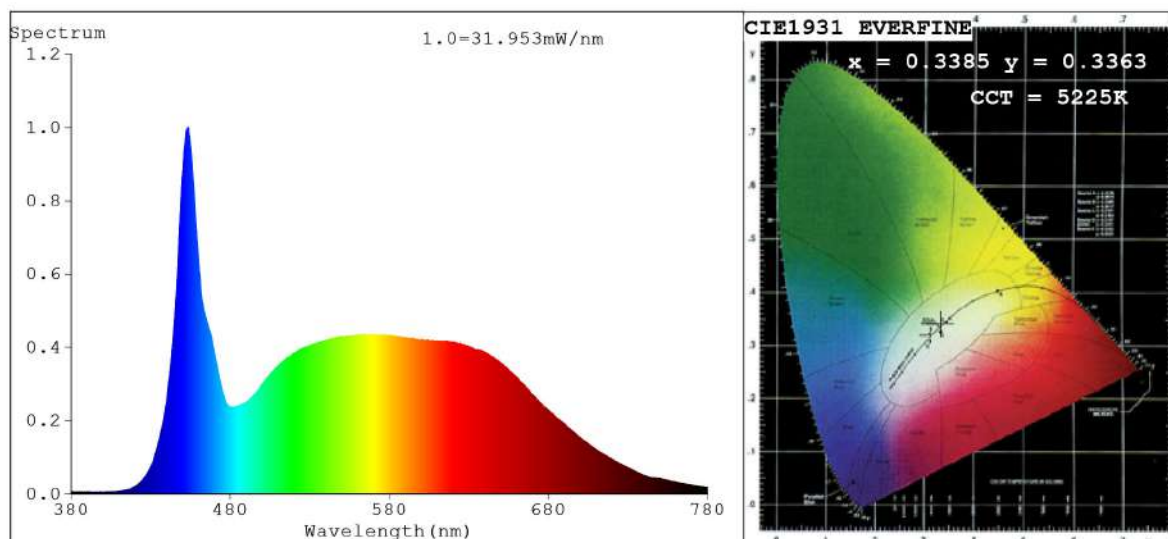


Spectrum Test Report



Color Parameters:

Chromaticity Coordinate: $x=0.3385$ $y=0.3363$ $u'=0.2130$ $v'=0.4760$
 CCT=5225K (Duv=-0.0051) Dominant WL:Ld =584.9nm Purity=2.5%
 Ratio:R=17.4% G=77.1% B=5.5%; Peak WL:Lp=453.3nm FWHM=18.6nm
 Render Index:Ra=94.2 CRI=91.7 TM30:Rf=88 Rg=101
 R1 =96 R2 =96 R3 =94 R4 =95 R5 =94 R6 =91 R7 =95
 R8 =93 R9 =84 R10=90 R11=94 R12=69 R13=97 R14=96 R15=98

Photo Parameters:

Flux = 946.4 lm Eff. : 70.70 lm/W Fe = 3.439 W Scotopic:2001.6 S/P:2.115

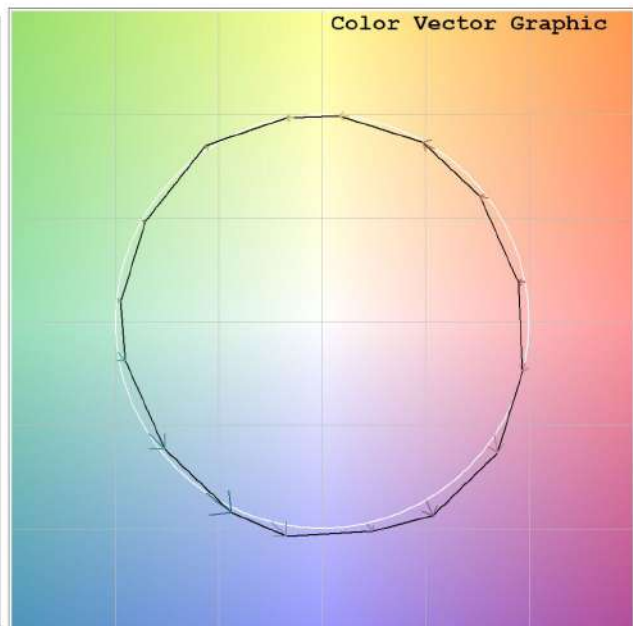
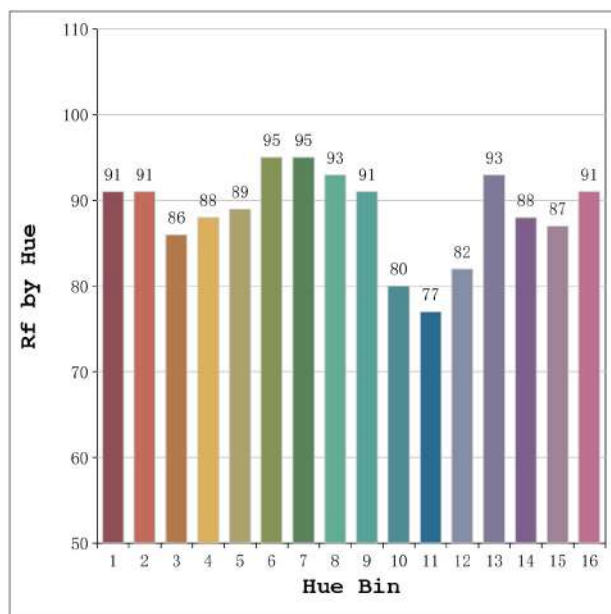
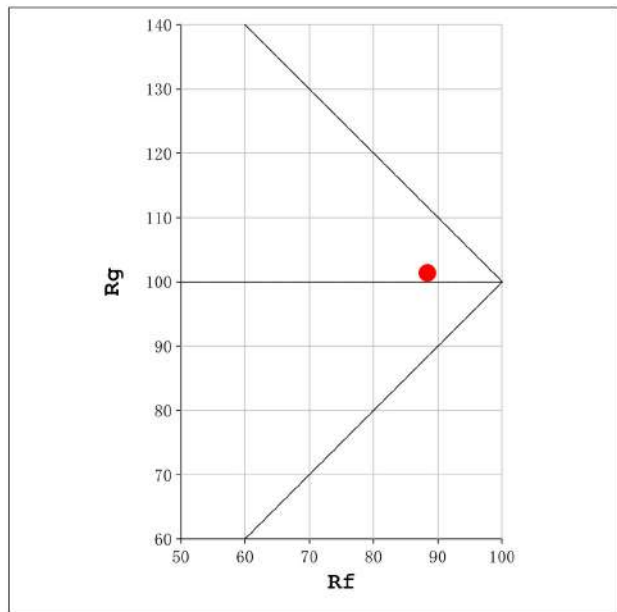
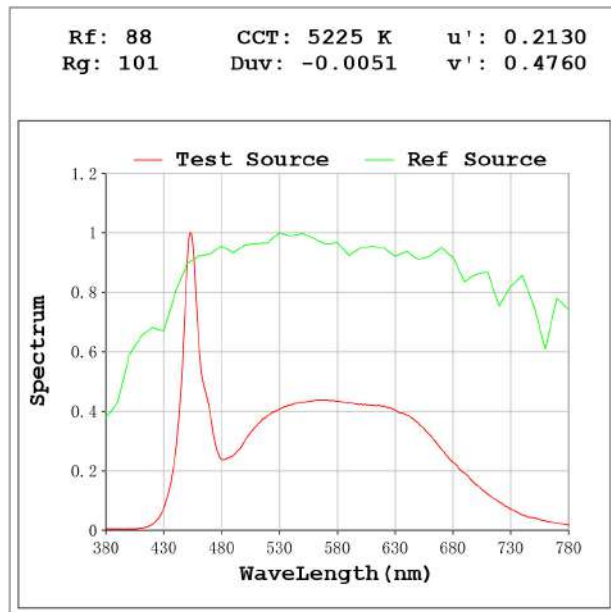
Electrical parameters:

V = 23.998 V I = 0.5578 A P = 13.39 W PF = 1.000

Status: Integral T = 1000 ms Ip = 43118 (66%)

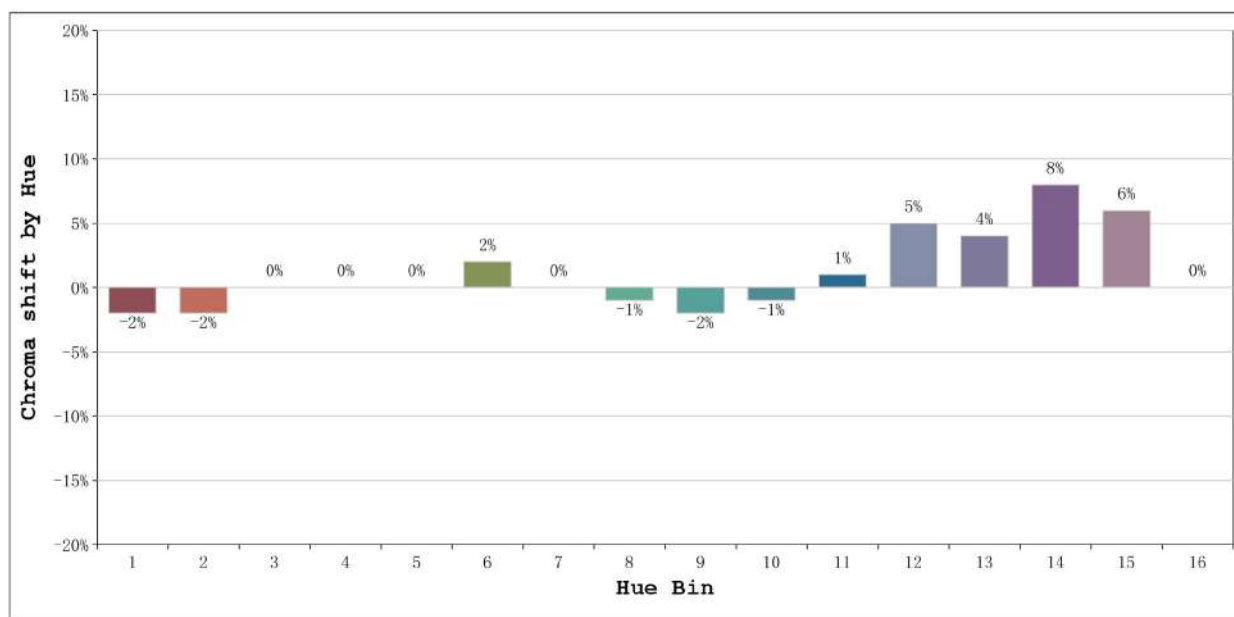
Model:Neon 360 5000k
 Tester:Sergio Carneros
 Temperature:27Deg
 Manufacturer:Luz Negra S.L

Number: 10.282
 Date:2024-05-08 12:43:24
 Humidity:40%
 Remarks:100cm de neon



Model: Neon 360 5000k
 Tester: Sergio Carneros
 Temperature: 27Deg
 Manufacturer: Luz Negra S.L

Number: 10.282
 Date: 2024-05-08 12:43:24
 Humidity: 40%
 Remarks: 100cm de neon



			Graphic shift(%)	
Hue Bin	Hue Angle	Rf	Chroma	Hue
1	0.0° - 22.5°	91	-2	0
2	22.5° - 45.0°	91	-2	3
3	45.0° - 67.5°	86	0	7
4	67.5° - 90.0°	88	0	5
5	90.0° - 112.5°	89	0	3
6	112.5° - 135.0°	95	2	0
7	135.0° - 157.5°	95	0	0
8	157.5° - 180.0°	93	-1	1
9	180.0° - 202.5°	91	-2	5
10	202.5° - 225.0°	80	-1	11
11	225.0° - 247.5°	77	1	15
12	247.5° - 270.0°	82	5	9
13	270.0° - 292.5°	93	4	2
14	292.5° - 315.0°	88	8	-1
15	315.0° - 337.5°	87	6	-5
16	337.5° - 360.0°	91	0	-3

Model: Neon 360 5000k
Tester: Sergio Carneros
Temperature: 27Deg
Manufacturer: Luz Negra S.L

Number: 10.282
Date: 2024-05-08 12:43:24
Humidity: 40%
Remarks: 100cm de neon